

Gear Pump Ass'y

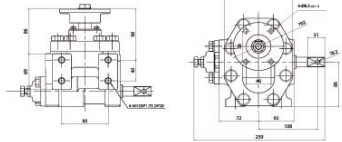
제품 설명 : 5톤이상의 덤프트럭에 장착되며 Transmission에 있는 P.T.O의 힘을 전달받아 이 기어펌프를 작동시켜 적재함에 있는 중량물을 들어올려 주는 장치

This product equipped at dump truck for construction & industrial uses, so it could supply the hydraulic to truck cylinder that helps to load & unload loaded materials.



제품사양 / Specification

5톤 전용 (For 5 ton)



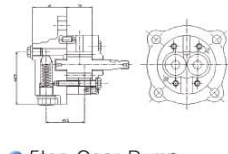
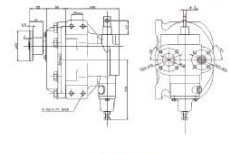
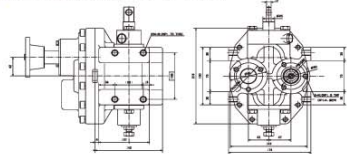
15ton Gear Pump



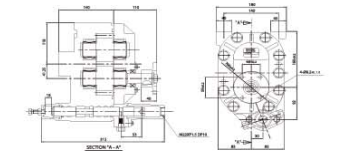
Oil Pump



8톤 공용 (Both for 8 tons)



15톤 전용 (136cc) (For 15 ton)



5ton Gear Pump



Specifications

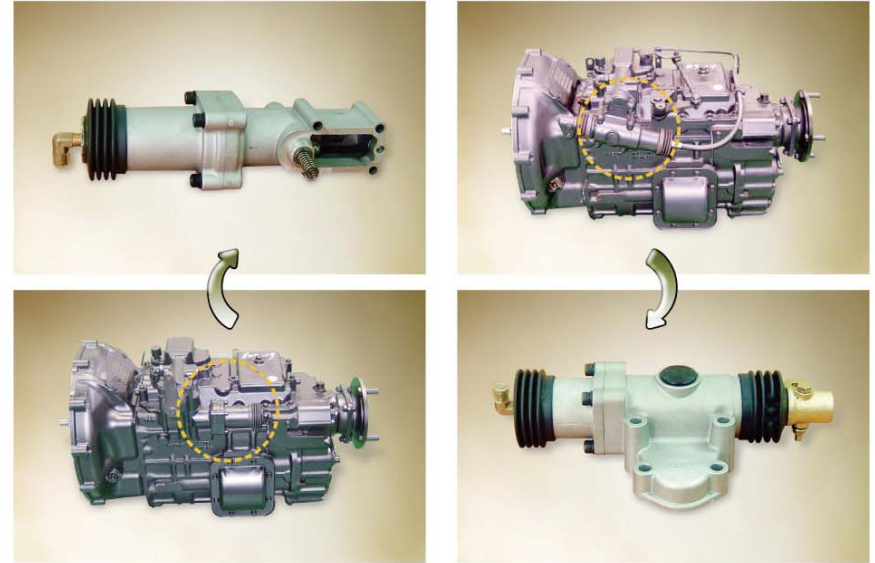
MODEL	YD05GPH	YD08GPH	YD15GPH
Displacement	54.2cc/rev	70cc/rev	136cc/rev
Pressure	Regular	70kg/cm ²	80kg/cm ²
	Maximum	120kg/cm ²	200kg/cm ²
Rotation Direction	Left (CCW)Viewed From Shaft End	Left (CCW)Viewed From Shaft End	Left (CCW)Viewed From Shaft End
Rotation Velocity	Regular	1000r.p.m	1000r.p.m
	Maximum	2000r.p.m	2000r.p.m
Mounting Size	85L×40W (M12×P1.75)	105L×600W (M12×P1.75)	140L×60W (M12×P1.75)
Weight	13kg	23.6kg	36.8kg
O·E·M	HYUNDAI	HYUNDAI · TATA-DAEWOO	HYUNDAI · TATA-DAEWOO

Power Shift Ass'y

제품 설명 : 5톤이상의 트럭 및 Bus, 대형 상용자동차의 Transmission에서 기어의 변속을 쉽게 해주는 장치 임

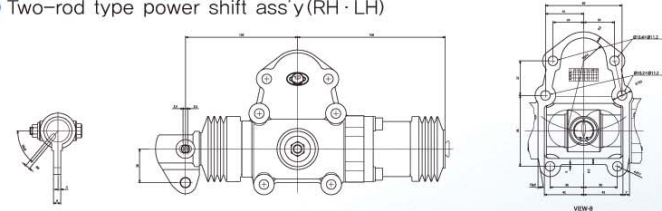
This product equipped at Transmission of over 5ton commercial vehicle, so it could help to transmit the gear easily & conveniently.

This product is equipped at Transmission of over 5ton commercial vehicle, so it could help to transmit the gear easily & conveniently. It has more simple structure than general power shift and has no more several RINK structure as good design for customer's request.



제품사양 / Specification

Two-rod type power shift ass'y (RH · LH)



One-rod type power shift ass'y (Cylinder Ø50. Ø60)

